

# Specifications Sheet

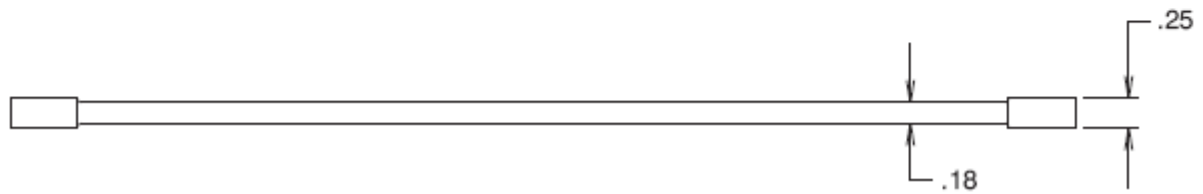
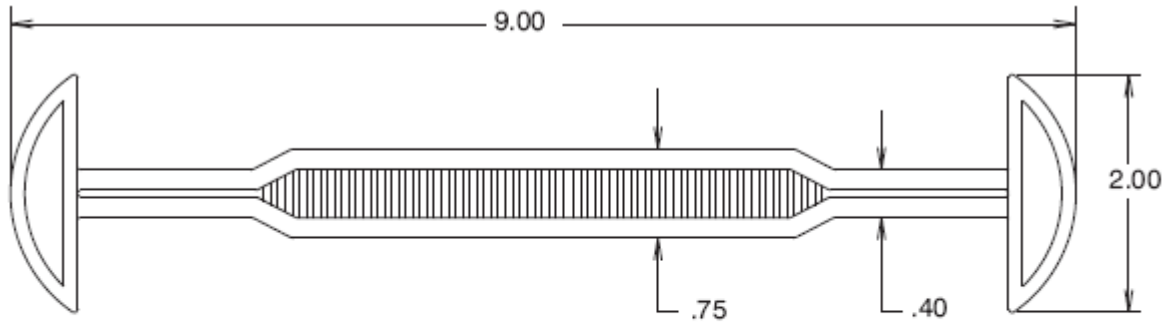
## Product Description

**Product Name** SR-330 9" HD 9" Heavy Duty Handle  
**Material** Low Density Polyethylene  
**Capacity** Up to 100 lbs

## Ordering Information

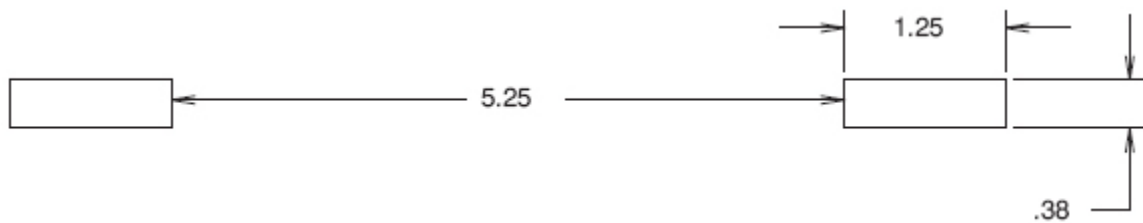
**Colors** Black, White, translucent

## Product Dimensions



*Dimensions are in inches*

## Die-Cut Dimensions



*Dimensions are in inches*



Phone: 201-343-3330 Fax: 201-343-0558

Email: [sales@lecoplastics.com](mailto:sales@lecoplastics.com)

[www.lecoplastics.com](http://www.lecoplastics.com)

# Specifications Sheet

## Packing Information

|                      |                     |
|----------------------|---------------------|
| <b>Carton Pack</b>   | 1,000 pieces/carton |
| <b>Carton Weight</b> | 38 lbs              |

### **\*Please Note:**

Make die-cuts as small as possible so as not to weaken board. Ease of insertion of handle must also be taken into consideration and depends on the thickness of the board.

1. Die-cuts shown were used to determine carrying weight of the handle.
2. Each application requires individual examination to determine proper Die-cut.
3. LecoPlastics will be glad to assist you in determining the best applicable die-cut.
4. Carrying weights of handles are for reference only, and depends on your Flute and board type.



**Phone:** 201-343-3330 **Fax:** 201-343-0558

**Email:** [sales@lecoplastics.com](mailto:sales@lecoplastics.com)  
[www.lecoplastics.com](http://www.lecoplastics.com)