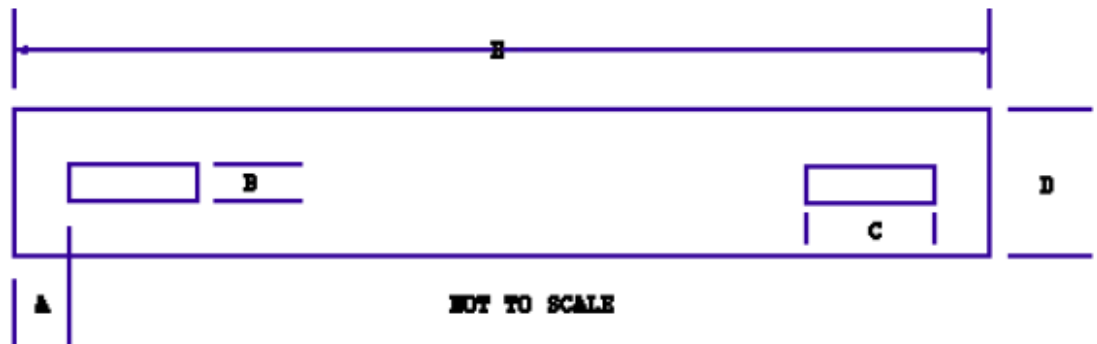


Specifications Sheet

Product Description

Product Name	# EX7-157-X10 Light Weight Handle	Colors	Black
Material	Low Density Polyethylene		
Size	A= 1/4" B= 3/16" C= 1/2" D= 3/4" E= Stock length is 7". Can be manufactured to any length required		

Product Dimensions



#2430 (Rivet On)



#2440 (Prong)



Packing Information

Required Hardware 430 Rivets On or 2440 Prong. Brass or Nickel plated

Please Note: Make die-cuts as small as possible so as not to weaken board. Ease of insertion of Handle must also be taken into consideration and depends on the thickness of the board.

1. Die-cuts shown were used to determine carrying weight of the handle.
2. Each application requires individual examination to determine proper die-cut.
3. Leco Plastics will be glad to assist you in determining the best applicable die-cut.
4. Carrying weights of handles are for reference only depending on your flute and board type.

LECO
PLASTICS

Phone: 201-343-3330 Fax: 201-343-0558

Email: sales@lecoplastics.com

www.lecoplastics.com